

Height :-
Finished floor to bottom Slab Height-3.00 m(10'-0")
Door Lintel Height -2.10m (7'-0")
Finished Floor to Ceiling Height-2.70 m(9'-0")

Legend for electrical		
Symbol	Wall mounted lighting	Height SB
	Main Switch board	1200
	6 - AMP Plug point	As per detail
	16 - AMP Plug point	
	5 AMP Plug point with switch	
	15 AMP Plug point with switch	1050
	TV Cable = 2 nos.-5 amp plug point @3'6" height.	
	Exhaust fan	Lintel
	15 - AMP Plug point for AC	Lintel above
	Led outdoor wall lighting	2400
	Lighting Distribution Box For Rooms	Lintel above

Ceiling material Legend	
Hatch	Material finish
	Gypsum ceiling

Lighting fixture Legend	
Symbol	Description
	circle Wall washer light-adjustable
	Decorative Hanging Light
	Recessed mounted Led down lighter-1
	Mirror light
	wall mounted up & Down Led light
	Foot light @9" ht. from finished floor

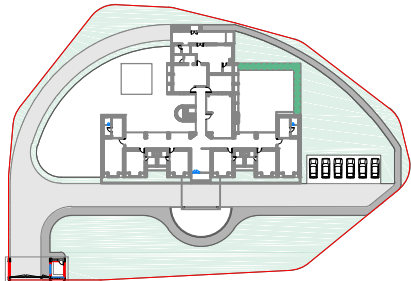
HVAC Legend	
Symbol	Description
	HI WALL

General Notes :

Legends for hatch	
	Existing Brick wall masonry
	Proposed Brick wall masonry
	Existing RCC Structure

Rev	Date	Issued	Issued to	Issued for	Author
R2	19-05-25	Softcopy	Contractor	Tender	KAP
R1	24-02-25	Softcopy	Contractor	Tender	KAP
R0	07-11-23	Softcopy	Contractor	Tender	KAP

Key Plan:



Project: GMDC Township Development			
Drawing: RCP Layout_First Floor VIP Guest House Sheet 03			
Drawing Code: 2310_INT_TD_GHB_FLC_R2			
Print Size: A2		Scale: 1:100	
File Title: 2310_INT_TD_GHB_FLC_R2			
Project Code: MSA 2310	Project Type : Arc & Int	Location: Ambaji	
Print Date	Drawn By	Checked By	Approved By
19-May-25	K Parikh	K Patel	M Shah

	MAMTA SHAH & ASSOCIATES Architects & Interior Designers C-12, Chanakyapuri Society, Chanakyapuri, New Sarna Road, Baroda Ph. No. +91 365 2712267 / 2710967 mamta@msain.com / www.msain.com
--	---

Client:	Gujarat Mineral Development Corporation
---------	---

